



USAID
FROM THE AMERICAN PEOPLE

USAID Country Health Statistical Report

Rwanda

January 2011



Table of Contents

1. About the Report

2. Country Profile

I. Statistical Overview

- *Demographic Indicators*
- *Socioeconomic Indicators*
- *Family Planning Indicators*
- *Maternal Health Indicators*
- *Child Survival Indicators*
- *HIV/AIDS Prevention Indicators*
- *Infectious Diseases Control Indicators*

II. Trends in Health Indicators

- *Current and Projected Population by Age and Sex*
(Figure 1 and Table 1.1)
- *Population Estimates and Projections*
(Table 1.2)
- *Estimated Total Fertility Rate per Woman*
(Figure 2 and Table 2)
- *Infant Mortality Rates / Under-5 Mortality Rates*
(Figure 3 and Table 3)
- *Vaccination Coverage (DPT3) Trends*
(Figure 4 and Table 4)
- *Contraceptive Prevalence Rates - Married Women*
(Figure 5 and Table 5)

3. Data Notes

4. Sources

About the Report

Released January 2011

This report is one of a series of Country Health Statistical Reports produced on behalf of the United States Agency for International Development (USAID) by the Analysis, Information Management and Communication Activity (AIM) Project. Each profile contains statistical data on current health conditions, population dynamics, health and family planning behavior, and health and population trends in a given developing country. Information is compiled from AIM's health statistics database, which draws data from a diverse range of sources listed at the end of this profile.

Hard copy editions of USAID's profiles are available from AIM'S publications department. Reports are available on the USAID Global Health Web site in Portable Document Format (pdf). Any feedback you have on the content or presentation of this report would be greatly appreciated. We would also appreciate receiving any more recent, more accurate, or more representative information. Contact us at the following:

Analysis, Information Management

&

Communications Activity (AIM)

655 15th Street, NW, Suite 450

Washington, DC 20005

Phone: 202-661-8600

Fax: 202-661-8601

E-mail: dolphn@aimglobalhealth.org

The Analysis, Information Management & Communications (AIM) Activity, a USAID contract managed by MasiMax Resources, Inc, with John Snow, Inc., ORC Macro, and Insight Systems Corporation prepared this document under task order number GPO-M-00-05-00043-00, with the Bureau for Global Health, USAID.

I. Statistical Overview

*see data notes

Demographic Indicators				
Indicator	Value	Data Unit	Year	Source
Total Population	11,055,976		2010	BUCEN-IDB-2010
Population Growth Rate	2.8	%	2010	BUCEN-IDB-2010
Percent Urban	20	%	2004	World Bank/WDI-2006
Women, 15-19	533,401		2010	BUCEN-IDB-2010
Women, 15-49	2,650,841		2010	BUCEN-IDB-2010
Life Expectancy at Birth	57.5		2010	BUCEN-IDB-2010
Crude Birth Rate	37.3	per 1,000	2010	BUCEN-IDB-2010
Crude Death Rate	10.2	per 1,000	2010	BUCEN-IDB-2010
Number of Live Births	411,946		2010	BUCEN-IDB-2010
Healthy Life Expectancy: Female	40		2002	WHO Global Health Atlas-2008
Healthy Life Expectancy: Male	36		2002	WHO Global Health Atlas-2008
Population: Percent < Age 15	43.1	%	2010	BUCEN-IDB-2010

Socioeconomic Indicators				
Indicator	Value	Data Unit	Year	Source
GNI per Capita (PPP)	1,320	\$	2005	World Bank/WDI-2006
Health Expenditure as Percentage of GDP	3.7	%	2003	World Bank/WDI-2006
Physicians per 1,000 People	0.02	per 1,000	2002	World Bank/WDI-2005
Adult Literacy Rate	64.9	%	2004	World Bank/WDI Database-2007
Adult Literacy Rate, Female	59 ¹	%	2002	World Bank/WDI-2006
Adult Literacy Rate, Male	70 ²	%	2002	World Bank/WDI-2006
Gross Enrollment Ratio - Primary School	147.4	%	2007	UNESCO Global Monitoring Report-2010
Gender Parity Index - Net Enrollment Ratio	1.3		2007	UNESCO Global Monitoring Report-2010
Access to an Improved Water Source (Rural)	69	%	2002	World Bank/WDI-2005
Access to an Improved Water Source (Urban)	92	%	2002	World Bank/WDI-2005
Access to Improved Sanitation Facilities (Rural)	38	%	2002	World Bank/WDI-2005
Access to Improved Sanitation Facilities (Urban)	56	%	2002	World Bank/WDI-2005
Population Living Below \$1 a Day	60.3	%	1990-2005	Human Development Report - 2007/2008-2008
Human Development Index	0.45		2005	Human Development Report - 2007/2008-2008
Population Below Poverty Line	60	%	2001	CIA World Factbook-2009
Real GDP (Growth) Rate	4.5	%	2009	CIA World Factbook-2010
Income Inequality (Gini index)	46.8		2000	CIA World Factbook-2009
Unemployment Rate	Data Not Available			
Inflation Rate	14.2	%	2009	CIA World Factbook-2010
Airports	9		2010	CIA World Factbook-2010
Airports with paved runways	4		2010	CIA World Factbook-2010

¹ Based on survey data.

² Based on survey data

Family Planning Indicators				
Indicator	Value	Data Unit	Year	Source
Total Fertility Rate (BUCEN)	5		2010	BUCEN-IDB-2010
Total Fertility Rate (DHS)	5.5		2007-2008	Rwanda DHS - Preliminary Report-2007-2008
Contraceptive Prevalence Rate, Modern Methods, All Women	5.6	%	2005	Rwanda DHS-2005
Contraceptive Prevalence Rate, Modern Methods, Married Women	27.4	%	2007-2008	Rwanda DHS - Preliminary Report-2007-2008
Median Age of Sexual Debut Among Women, Ages 25-49	20.3		2005	Rwanda DHS-2005
Mean Ideal Family Size	4.3		2005	Rwanda DHS-2005
Women 20-24 Who Gave Birth Before Age 20	22.3	%	2005	Rwanda DHS-2005
Total Fertility Rate, Rural	5.7 ¹		2007-2008	Rwanda DHS - Preliminary Report-2007-2008
Unmet Need for Family Planning: Rural	38.4	%	2005	DHS STATcompiler as of September 2008-2008
Unmet Need for Family Planning: Urban	34.4	%	2005	DHS STATcompiler as of September 2008-2008
Contraceptive Prevalence Rate, All Methods	39.2	%	2007-2008	Rwanda DHS Final Report-2007
Equity in use of modern contraception	0.27	Ratio	2005	Rwanda DHS-2005
Percent of need satisfied by modern methods of family planning	18.6	%	2005	Rwanda DHS-2005

Maternal Health Indicators				
Indicator	Value	Data Unit	Year	Source
Maternal Mortality Ratio (WHO/Hill)	1,300	Per 100,000 live births	2005	WHO/Hill-2005
Maternal Mortality Ratio (DHS)	1,071	Per 100,000 live births	2000	Rwanda DHS-2000
Antenatal Care (at least 1 visit)	94.4	%	2005	Rwanda DHS-2005
Antenatal Care (2+ visits)	81.4	%	2005	Rwanda DHS-2005
Antenatal Care (4+ visits)	13.3	%	2005	Rwanda DHS-2005
Assisted Delivery by a Health Professional	52.1	%	2007-2008	Rwanda DHS - Preliminary Report-2007-2008
Assisted Delivery by Doctor	5	%	2005	Rwanda DHS-2005
Assisted Delivery by Other Health Professional	54.6	%	2000	Rwanda DHS-2000
Anemia prevalence among women of reproductive age	27	%	2007-2008	Rwanda DHS - Preliminary Report-2007-2008
Equity in skilled attendance at delivery	Data Not Available			

¹ This data reflects report data, not Statcompiler data.

Child Survival Indicators				
Indicator	Value	Data Unit	Year	Source
Acute Respiratory Infection (ARI) and Oral Rehydration Therapy (ORT)				
ARI Care Seeking - Children Under 5	28.2	%	2007-2008	Rwanda DHS - Preliminary Report-2007-2008
ORT Use Rate (ORS, RHS, or Increased Fluids)	30.8	%	2007-2008	Rwanda DHS - Preliminary Report-2007-2008
Mortality Indicators				
Infant Mortality Rate (BUCEN)	65.6	per 1,000 live births	2010	BUCEN-IDB-2010
Infant Mortality Rate (UNICEF)	72		2008	UNICEF-2010
Infant Mortality Rate (DHS)	62	per 1,000 live births	2007-2008	Rwanda DHS - Preliminary Report-2007-2008
Infant Mortality Rate, Females (BUCEN)	61.8	per 1,000 live births	2010	BUCEN-IDB-2010
Infant Mortality Rate, Males (BUCEN)	69.2	per 1,000 live births	2010	BUCEN-IDB-2010
Under-5 Mortality Rate (BUCEN)	164.4	per 1,000 live births	2010	BUCEN-IDB-2006
Neonatal Mortality Rate	28 ¹	per 1000	2007-2008	Rwanda DHS - Preliminary Report-2007-2008
Under-5 Mortality Rate (UNICEF)	112	per 1,000 live births	2008	UNICEF-2010
Under-5 Mortality Rate (DHS)	103	per 1,000 live births	2007-2008	Rwanda DHS - Preliminary Report-2007-2008
Nutrition Indicators				
Exclusive Breastfeeding (under 4 mos.)	93	%	2005	Rwanda DHS-2005
Exclusive Breastfeeding (under 6 mos.)	88.4	%	2005	Rwanda DHS-2005
Stunted (height-for-age)	45.3	%	2005	Rwanda DHS-2005
Underweight (weight-for-age)	22.5	%	2005	Rwanda DHS-2005
Wasted (weight-for-height)	3.9	%	2005	Rwanda DHS-2005
Vaccination Coverage				
DPT3 Vaccination Rate (DHS)	89.8	%	2007-2008	Rwanda DHS - Preliminary Report-2007-2008
DPT3 Vaccination Rate (WHO)	97	%	2008	WHO: Global Summary-2009
Measles Vaccination Rate (DHS)	90.4	%	2007-2008	Rwanda DHS - Preliminary Report-2007-2008
Measles Vaccination Rate (WHO)	92	%	2008	WHO: Global Summary-2009
Polio Vaccination Rate (DHS)	85.5	%	2007-2008	Rwanda DHS - Preliminary Report-2007-2008
Polio Vaccination Rate (WHO)	97	%	2008	WHO: Global Summary-2009
Tetanus Toxoid Vaccination	72.4	%	2007-2008	Rwanda DHS - Preliminary Report-2007-2008
Equity in DPT3 coverage (DHS)	1	Ratio	2005	Rwanda DHS-2005
Improved sanitation/hygiene practices	Data Not Available			
Vitamin A supplementation coverage among children 6-59 months	87.3	%	2005	Rwanda DHS-2005

¹ This data reflects report data, not Statcompiler data.

HIV/AIDS Prevention Indicators				
Indicator	Value	Data Unit	Year	Source
HIV Prevalence proportion: Adults (15–49 years)	2.8	%	2007	UNAIDS 2008-2008
Estimated number of people living with HIV: Adults and Children	150,000		2007	UNAIDS 2008-2008
Estimated number of people living with HIV: Women (15+ years)	78,000		2007	UNAIDS 2008-2008
Estimated number of people living with HIV: Children (0–14 years)	19,000		2007	UNAIDS 2008-2008
Males Reporting Condom Use With Last Non-Regular Partner	40.9	%	2005	Rwanda DHS-2005
Females Reporting Condom Use With Last Non-Regular Partner	19.7	%	2005	Rwanda DHS-2005

Infectious Diseases Control Indicators				
Indicator	Value	Data Unit	Year	Source
TB Estimated Number of Cases	38,606		2007	WHO: Global Atlas-2009
TB Case Detection Rate	19	%	2007	Global Atlas-2010
TB (DOTS) Treatment Success Rate	86	%	2006	WHO: Global Atlas-2009
Malaria Cases per 100,000	9,474 ¹	per 100,000	2003	WHO Global Health Atlas-2008
DOTS Coverage	100	%	2007	WHO: Global Atlas-2009
HIV-Infected with Active TB	37.5	%	2007	WHO: Global Atlas-2009
Avian Influenza: Cumulative Number of Confirmed Human Cases	Data Not Available			
Avian Influenza: Cumulative Number of Confirmed Human Deaths	Data Not Available			
Child Sleeps Under Insecticide-Treated Net	58	%	2008	Rwanda DHS Final Report-2007
Equity in Bednet (ITN) Ownership	0.13	Ratio	2005	Rwanda DHS-2005

¹ Calculated using (100,000/WHO population)xMalaria Reported # of Cases

II. Trends in Health Indicators

Figure 1: Current and Projected Population by Age and Sex (in thousands)

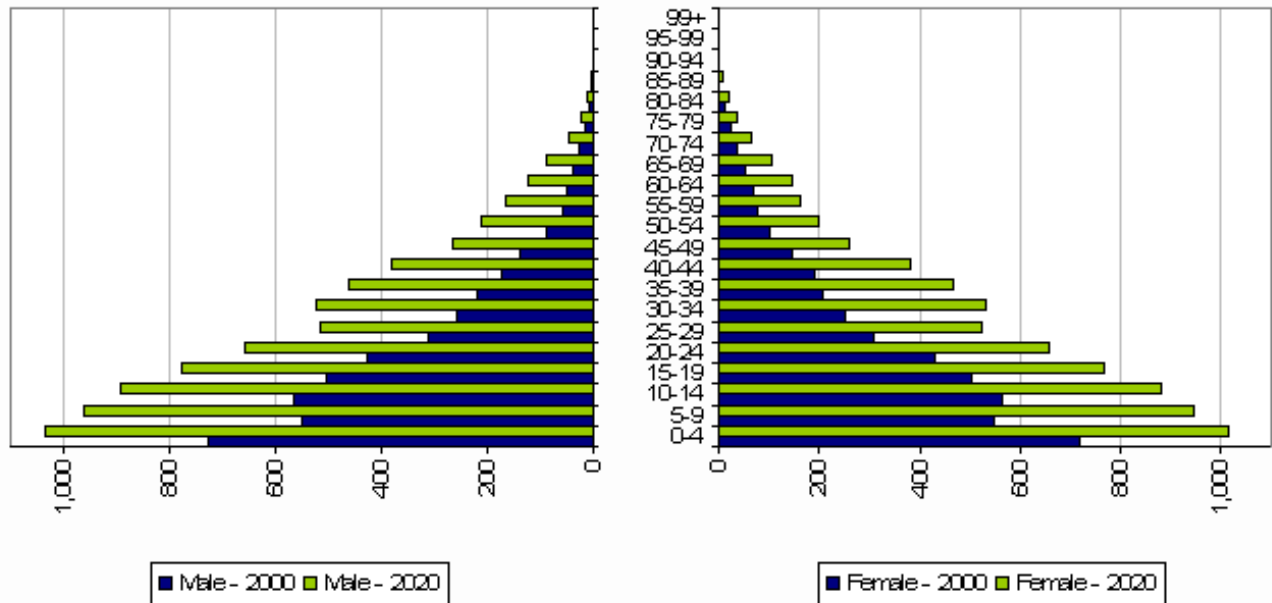


Table 1.1: Current and Projected Population by Age and Sex

Source: BUCEN-IDB

Age Group	Male - 2000	Male - 2020	Female - 2000	Female - 2020
0-4	726,890	1,033,958	717,303	1,012,801
5-9	549,434	961,411	548,954	946,408
10-14	563,842	892,128	562,524	880,056
15-19	504,879	775,375	504,676	767,012
20-24	426,873	658,838	428,464	659,293
25-29	309,836	515,265	309,732	522,443
30-34	259,135	523,374	249,651	531,330
35-39	217,559	461,867	208,760	468,649
40-44	173,553	379,715	189,927	380,294
45-49	137,056	265,505	144,923	261,302
50-54	87,571	210,598	101,330	200,888
55-59	56,403	167,036	76,878	164,159
60-64	49,133	124,482	68,104	146,491
65-69	40,010	88,496	54,640	104,391
70-74	27,384	48,032	37,940	63,459
75-79	16,252	23,364	22,635	37,422
80-84	7,787	12,663	10,932	21,655
85-89	2,552	4,851	3,841	8,754
90-94	354	1,057	583	2,120
95-99	43	126	64	284
99+	3	8	3	20

TABLE 1.2: Population Estimates and Projections

Source: BUCEN-IDB

1960	1970	1980	1990	2000	2010	2020	2030	2040	2050
3,031,804	3,769,171	5,139,838	6,999,318	8,398,413	11,055,976	14,327,380	17,983,250	22,378,177	27,506,207

Figure 2: Estimated Total Fertility Rate per Woman

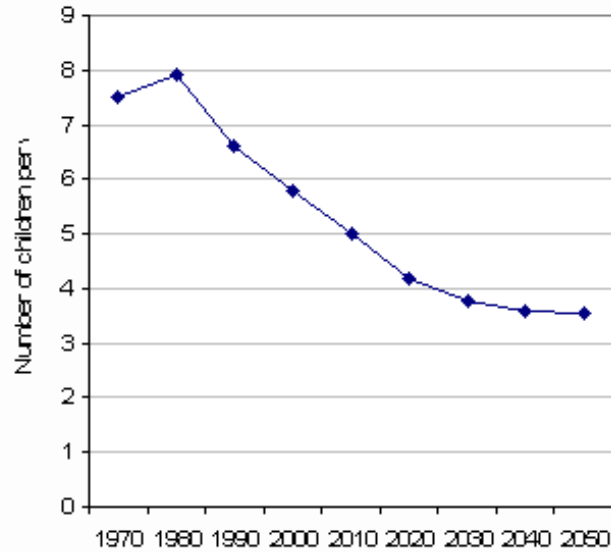


Table 2: Estimated Total Fertility Rate per Woman

Source: BUCEN-IDB

1970	1980	1990	2000	2010	2020	2030	2040	2050
7.5	7.9	6.6	5.8	5.0	4.2	3.8	3.6	3.5

Figure 3: Infant Mortality Rates / Under-5 Mortality Rates

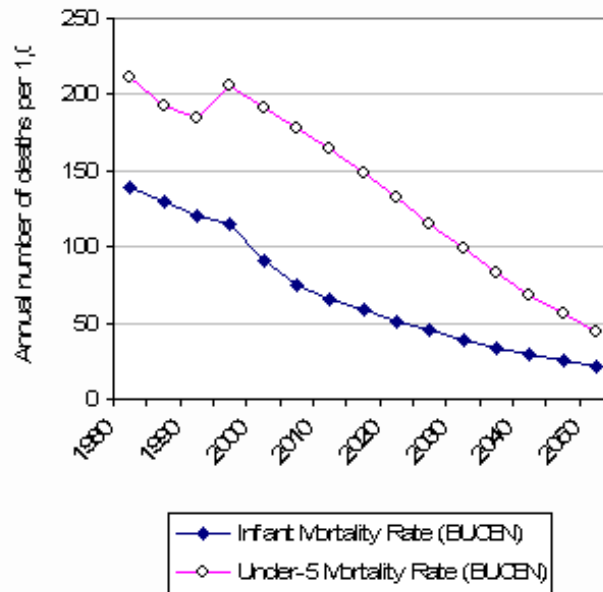


Table 3: Infant Mortality Rates / Under-5 Mortality Rates

Source: BUCEN-IDB 2010

Indicator	1980	1985	1990	1995	2000	2005	2010	2015	2020	2025	2030	2035	2040	2045	2050
Infant Mortality Rate (BUCEN)	139.0	129.3	120.7	114.8	90.8	74.3	65.6	58.2	51.3	45.0	39.2	34.0	29.3	25.2	21.7
Under-5 Mortality Rate (BUCEN)	211.3	192.7	184.2	206.2	191.1	178.3	164.4	148.3	131.8	115.2	98.9	83.2	68.6	55.6	44.5

Figure 4: Vaccination Coverage (DPT3) Trends

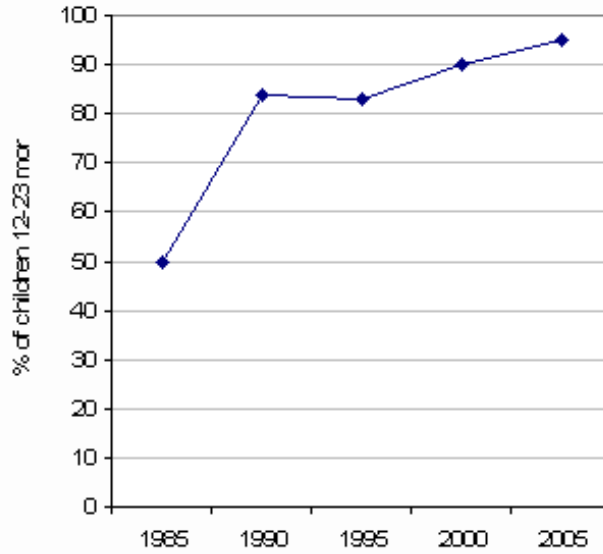


Table 4: Vaccination Coverage (DPT3) Trends

Source: WHO/Global Summary

WHO: Global Summary

1985	1990	1995	2000	2005
50.0	84.0	83.0	90.0	95.0

Figure 5: Contraceptive Prevalence Rates, Modern Methods, Married Women

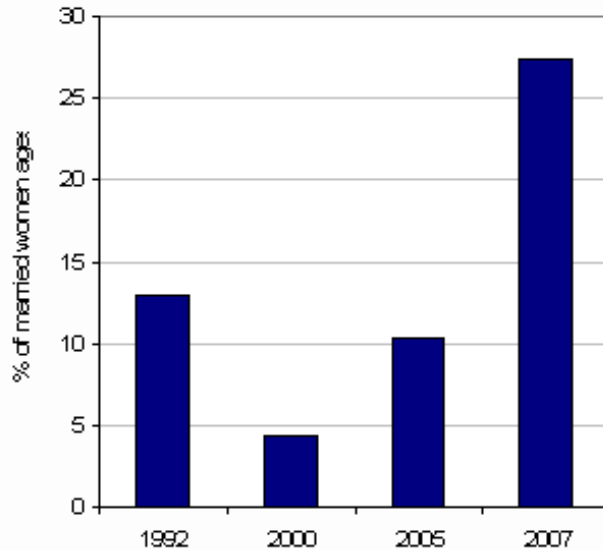


Table 5: Contraceptive Prevalence Rates, Modern Methods, Married Women

Source: Rwanda DHS

Rwanda DHS - Preliminary Report

1992	2000	2005	2007
12.9	4.3	10.3	27.4

Data Notes

*Indicator definitions that differ from those in the data notes section are identified by footnotes accompanying the indicator tables.

Demographic Indicators

Total Population	The number of people in a given area (i.e., country) in a particular time period (usually a midyear estimate).
Population Growth Rate	The average annual growth rate is the rate of natural increase in a population plus the net migration rate. The rate of natural increase is the difference between the birth rate and the death rate, but it is conventionally measured in percentage terms (per hundred rather than per thousand).
Percent Urban	The percentage of the midyear population living in areas defined as urban in each country and reported to the United Nations.
Women, 15-19	The number of women between the ages of 15-19 in the midyear population.
Women, 15-49	The number of women between the ages of 15-49 in the midyear population.
Life Expectancy at Birth	The average number of years that a person at age 0 will live if age-specific death rates remain constant. Life expectancy at birth is highly affected by rates of infant and child death.
Crude Birth Rate	The number of births per thousand of the population. The product of the number of live births, divided by the midpoint population, multiplied by 1,000.
Crude Death Rate	The number of deaths per thousand of the population. The product of the number of deaths divided by the midpoint population, multiplied by 1,000.
Number of Live Births	The number of live births, annually, within a country.
Healthy Life Expectancy: Female	The number of years of in full health that a female newborn can expect to live based on current rates of ill-health and mortality. HALE is based on life expectancy at birth but includes an adjustment for time spent in poor health.
Healthy Life Expectancy: Male	The number of years of in full health that a male newborn can expect to live based on current rates of ill-health and mortality. HALE is based on life expectancy at birth but includes an adjustment for time spent in poor health.
Population: Percent < Age 15	Percent of population less than 15 years of age.

Socioeconomic Indicators

GNI per Capita (PPP)	The gross national income (GNI) converted to international dollars using purchasing power parity (PPP) rates. An international dollar has the same purchasing power over GNI as a U.S. dollar has in the United States.
Health Expenditure as Percentage of GDP	Total health expenditures is the sum of public and private health expenditures figured as a percentage of a country's gross domestic product (GDP). It covers the provision of health services (preventive and curative), family planning activities, nutrition activities, and emergency aid designated for health but does not include provision of water and sanitation.
Physicians per 1,000 People	Physicians are defined as graduates of any faculty or school of medicine who are working in the country in any medical field (practice, teaching, research).
Adult Literacy Rate	The percentage of people ages 15 and over who can, with understanding, read and write a short, simple statement about their everyday life.
Adult Literacy Rate, Female	The percentage of women ages 15 and over who can, with understanding, read and write a short, simple statement about their everyday life.

Adult Literacy Rate, Male	The percentage of men ages 15 and over who can, with understanding, read and write a short, simple statement about their everyday life.
Gross Enrollment Ratio - Primary School	Total enrolment in primary level of education, regardless of age, expressed as a percentage of the population in the official age group corresponding to primary level of education. The GER can exceed 100% due to late entry or/and repetition.
Gender Parity Index - Net Enrollment Ratio	The ratio of the female-to-male values (or male to female, in certain cases) of net primary school enrollment rates (NER). NER measures the number of pupils in the official age group for a given level of education, expressed as a percentage of the population in that age group.
Access to an Improved Water Source (Rural)	Access to an improved water source in rural areas. Refers to the percentage of the rural population with reasonable access to an adequate amount of water from an improved source, such as a household connection, public standpipe, borehole, protected well or spring, or rainwater collection. Unimproved sources include vendors, tanker trucks, and unprotected wells and springs.
Access to an Improved Water Source (Urban)	Access to an improved water source in urban areas. Refers to the percentage of the urban population with reasonable access to an adequate amount of water from an improved source, such as a household connection, public standpipe, borehole, protected well or spring, or rainwater collection. Unimproved sources include vendors, tanker trucks, and unprotected wells and springs.
Access to Improved Sanitation Facilities (Rural)	Access to improved sanitation facilities in rural areas. Refers to the percentage of the rural population with access to at least adequate excreta disposal facilities (private or shared, but not public) that can effectively prevent human, animal, and insect contact with excreta.
Access to Improved Sanitation Facilities (Urban)	Access to improved sanitation facilities in urban areas. Refers to the percentage of the urban population with access to at least adequate excreta disposal facilities (private or shared, but not public) that can effectively prevent human, animal, and insect contact with excreta.
Population Living Below \$1 a Day	The percentage of the population living below the specified poverty line of \$1 a day at 1985 international prices (equivalent to \$1.08 at 1993 international prices), adjusted for purchasing power parity.
Human Development Index	The HDI is a composite index that measures the average achievements in a country in three basic dimensions of human development: a long and healthy life, as measured by life expectancy at birth; knowledge, as measured by the adult literacy rate and the combined gross enrollment ratio for primary, secondary, and tertiary schools; and a decent standard of living, as measured by gross domestic product (GDP) per capita in purchasing power parity (PPP) US dollars.
Population Below Poverty Line	National estimates of the percentage of the population falling below the poverty line are based on surveys of sub-groups, with the results weighted by the number of people in each group. Definitions of poverty vary considerably among nations. For example, rich nations generally employ more generous standards of poverty than poor nations.
Real GDP (Growth) Rate	This entry gives the gross domestic product (GDP) growth on an annual basis adjusted for inflation and expressed as a percent.
Income Inequality (Gini index)	This index measures the degree of inequality in the distribution of family income in a country. It is calculated from the Lorenz curve, in which cumulative family income is plotted against the number of families arranged from the poorest to the richest. The index is the ratio of (a) the area between a country's Lorenz curve and the 45 degree helping line to (b) the entire triangular area under the 45 degree line. The more nearly equal a country's income distribution, the closer its Lorenz curve to the 45 degree line and the lower its Gini index, e.g., a Scandinavian country with an index of 25. The more unequal a country's income distribution, the higher its Gini index, e.g., a Sub-Saharan country with an index of 50. If income were distributed with perfect equality, the index would be zero; if income were distributed with perfect inequality, the index would be 100.
Unemployment Rate	This entry contains the percent of the labor force that is without jobs. Substantial underemployment might be noted.
Inflation Rate	This entry furnishes the annual percent change in consumer prices compared with the previous year's consumer prices.

Airports	This entry gives the total number of airports or airfields recognizable from the air. The runway(s) may be paved (concrete or asphalt surfaces) or unpaved (grass, earth, sand, or gravel surfaces) but may include closed or abandoned installations. Airports or airfields that are no longer recognizable (overgrown, no facilities, etc.) are not included. Note that not all airports have accommodations for refueling, maintenance, or air traffic control.
Airports with paved runways	This entry gives the total number of airports with paved runways (concrete or asphalt surfaces) by length. For airports with more than one runway, only the longest runway is included according to the following five groups - (1) over 3,047 m, (2) 2,438 to 3,047 m, (3) 1,524 to 2,437 m, (4) 914 to 1,523 m, and (5) under 914 m. Only airports with usable runways are included in this listing. Not all airports have facilities for refueling, maintenance, or air traffic control.
Family Planning Indicators	
Total Fertility Rate (BUCEN)	The number of children a woman between ages 15-49 would have during her reproductive life, if, for all of her childbearing years she were to experience the age-specific birth rates for that given year.
Total Fertility Rate (DHS)	The number of children a woman between ages 15-49 would have during her lifetime if she were to bear children at the currently observed rates.
Contraceptive Prevalence Rate, Modern Methods, All Women	Percentage of all women ages 15-49 currently using a modern method of contraception. Modern methods include oral contraceptives, IUDs, injectables, female and male sterilization, all emergency contraception, and barrier methods (diaphragm, foam, jelly, male and female condom).
Contraceptive Prevalence Rate, Modern Methods, Married Women	Percent of currently married women ages 15-49 currently using a modern method of contraception. Modern methods include oral contraceptives, IUDs, injectables, female and male sterilization, all emergency contraception, and barrier methods (diaphragm, foam, jelly, male and female condom).
Median Age of Sexual Debut Among Women, Ages 25-49	Median age of first sexual intercourse for women ages 25-49.
Mean Ideal Family Size	Mean ideal number of children for all women, according to number of living children.
Women 20-24 Who Gave Birth Before Age 20	Percentage of women ages 20-24 who have given birth before age 20.
Total Fertility Rate, Rural	In rural areas only, the number of children a woman between ages 15-49 would have during her lifetime if she were to bear children at the currently observed rates.
Unmet Need for Family Planning: Rural	In rural areas, percentage of married women ages 15-49 with unmet need for family planning. Unmet need for spacing includes pregnant women whose pregnancy was mistimed, amenorrheic women who are not using family planning and whose last birth was mistimed, and fecund women who are neither pregnant nor amenorrheic and who are not using any method of family planning and say they want to wait 2 or more years for their next birth. Also included are fecund women who are not using any method of family planning and say they are unsure whether they want another child or who want another child but are unsure when to have the birth unless they say it would not be a problem if they discovered they were pregnant in the next few weeks. Unmet need for limiting refers to pregnant women whose pregnancy was unwanted, amenorrheic women whose last child was unwanted, and fecund women who are neither pregnant nor amenorrheic and who are not using any method of family planning and want no more children.
Unmet Need for Family Planning: Urban	In urban areas, percentage of married women ages 15-49 with unmet need for family planning. Unmet need for spacing includes pregnant women whose pregnancy was mistimed, amenorrheic women who are not using family planning and whose last birth was mistimed, and fecund women who are neither pregnant nor amenorrheic and who are not using any method of family planning and say they want to wait 2 or more years for their next birth. Also included are fecund women who are not using any method of family planning and say they are unsure whether they want another child or who want another child but are unsure when to have the birth unless they say it would not be a problem if they discovered they were pregnant in the next few weeks. Unmet need for limiting refers to pregnant women whose pregnancy was unwanted, amenorrheic women whose last child was unwanted, and fecund women who are neither pregnant nor amenorrheic and who are not using any method of family planning and want no more children.

Contraceptive Prevalence Rate, All Methods	Percentage of currently married women ages 15-49 currently using ANY method of contraception.
Equity in use of modern contraception	Contraceptive prevalence rate in the lowest wealth quintile/contraceptive prevalence rate in the highest wealth quintile.
Percent of need satisfied by modern methods of family planning	Number of women in union who are fecund and are currently using modern contraceptive methods to stop or postpone the next pregnancy/number of women in union who are fecund and who desire to either terminate childbearing or to postpone their next birth for 2 years or more.
Maternal Health Indicators	
Maternal Mortality Ratio (WHO/Hill)	The estimated number of women who die as a result of pregnancy or childbirth per 100,000 live births arrived through Hill et al., adjustment procedure depending on the nature of data used. The margins of uncertainty associated with the estimated maternal mortality ratios are very large and the estimates should not be used to monitor trends in the short term (including comparisons between 1995 and 2000 estimates). In addition, cross-country comparisons should be treated with considerable circumspection because different strategies are used to derive the estimates for different countries rendering comparisons fraught with difficulty. For further information please refer to the source.
Maternal Mortality Ratio (DHS)	The estimated number of women who die as a result of pregnancy or childbirth per 100,000 live births, arrived mostly through the "sisterhood method". The data are aggregated based on different time periods ranging from four to ten years preceding the survey. Thus, the data may not be suitable for trend analysis due to over-lapping year ranges of estimates. For further information on methodology please refer to: Stanton, Cynthia, Nouredine Abderrahim, and Kenneth Hill. 1997. DHS Maternal Mortality Indicators: An assessment of Data Quality and Implications for Data Use. Calverton: Macro International Inc., or individual country DHS reports.
Antenatal Care (at least 1 visit)	Percentage of women of reproductive age (15-49) who receive at least one antenatal care visit during pregnancy (in the three-year period preceding the survey).
Antenatal Care (2+ visits)	Percentage of women of reproductive age (15-49) who receive at least two antenatal care visits during pregnancy (in the three-year period preceding the survey).
Antenatal Care (4+ visits)	Percentage of women of reproductive age (15-49) who receive four or more antenatal care visits during pregnancy (in the three-year period preceding the survey).
Assisted Delivery by a Health Professional	The percentage of births/deliveries that occur with the assistance of any trained health professional during the five-year period preceding the survey. May include doctors, nurses, or midwives.
Assisted Delivery by Doctor	The percentage of live births/deliveries that occur with the assistance of a doctor during the five-year period preceding the survey.
Assisted Delivery by Other Health Professional	The percentage of live births/deliveries that occur with the assistance of a nurse or midwife during the five-year period preceding the survey.
Anemia prevalence among women of reproductive age	Number of women of reproductive age (15-49 years) with anemia/number of women of reproductive age (15-49 years).
Equity in skilled attendance at delivery	Percentage of births in the lowest wealth quintile attended by a doctor, nurse, or trained midwife/percentage of births in the highest wealth quintile attended by a doctor, nurse, or trained midwife.
Child Survival Indicators	
ARI Care Seeking - Children Under 5	Percentage of children under five years who were ill with an acute respiratory infection (ARI), which is associated with cough, rapid breathing and a high fever, during the two weeks preceding the survey, for whom care was sought from a health facility or provider.
ORT Use Rate (ORS, RHS, or Increased Fluids)	Oral Rehydration Therapy (ORT). Percentage of children under age 5 with diarrhea two weeks prior to survey who received increased fluids, oral rehydration solution (ORS) or recommended home solution (RHS).
Infant Mortality Rate (BUCEN)	The estimated annual number of deaths of infants under 12 months in a given year per 1,000 live births in that same year.

Infant Mortality Rate (UNICEF)	The under five mortality rate is the probability (as expressed as a rate per 1,000 live births) of a child born in a specified year dying before reaching the age of one if subject to current age-specific mortality rates.
Infant Mortality Rate (DHS)	The estimated annual number of deaths of infants under 12 months in a given year per 1,000 live births in that same year (five-year period preceding survey).
Infant Mortality Rate, Females (BUCEN)	The estimated annual number of deaths of female infants under 12 months in a given year per 1,000 live births in that same year.
Infant Mortality Rate, Males (BUCEN)	The estimated annual number of male infants under 12 months in a given year per 1,000 live births in that same year.
Under-5 Mortality Rate (BUCEN)	Annual number of deaths that occur in children 0-4 years old per 1,000 births.
Neonatal Mortality Rate	The estimated number of infant deaths in the first month of life per 1,000 live births in the five-year period preceding the survey.
Under-5 Mortality Rate (UNICEF)	Annual number of deaths that occur in children 0-4 years old per 1,000 births (five-year period preceding survey).
Under-5 Mortality Rate (DHS)	Annual number of deaths that occur in children 0-4 years old per 1,000 births (five-year period preceding survey).
Exclusive Breastfeeding (under 4 mos.)	Percentage of children under 4 months exclusively breastfed. Exclusive breastfeeding is defined as providing no food or liquid other than breast milk to the child during the 24-hour period before the survey.
Exclusive Breastfeeding (under 6 mos.)	Percentage of children under 6 months exclusively breastfed. Exclusive breastfeeding is defined as providing no food or liquid other than breast milk to the child during the 24-hour period before the survey.
Stunted (height-for-age)	Percentage of children under age five whose height-for-age is below minus-two standard deviations from the median of the reference population.
Underweight (weight-for-age)	Percentage of children under age five whose weight-for-age is below minus-two standard deviations from the median of the reference population.
Wasted (weight-for-height)	Percentage of children under age five whose weight-for-height is below minus-two standard deviations from the median of the reference population.
DPT3 Vaccination Rate (DHS)	Proportion of living children 12-23 months old who have received three complete doses of vaccines against diphtheria, pertussis, and tetanus.
DPT3 Vaccination Rate (WHO)	Proportion of living children 12-23 months old who have received three complete doses of vaccines against diphtheria, pertussis, and tetanus.
Measles Vaccination Rate (DHS)	Percentage of living children 12-23 months old who have received one dose of Measles Containing Vaccine.
Measles Vaccination Rate (WHO)	Percentage of living children 12-23 months old who have received one dose of Measles Containing Vaccine.
Polio Vaccination Rate (DHS)	Proportion of living children 12-23 months who have received three doses of polio vaccine.
Polio Vaccination Rate (WHO)	Proportion of living children 12-23 months who have received three doses of polio vaccine.
Tetanus Toxoid Vaccination	Percentage of pregnant women receiving two (or more) doses of tetanus toxoid (three-year period preceding survey).
Equity in DPT3 coverage (DHS)	DPT3 coverage in the lowest wealth quintile/DPT3 coverage in the highest wealth quintile.
Improved sanitation/hygiene practices	Number of households with child under 5 years of age whose youngest child's feces was safely disposed of the last time he/she passed stool/total number of households with a child under 5 years of age.

Vitamin A supplementation coverage among children 6-59 months

Number of children aged 6-59 months who received a vitamin A supplement in the last 6 months/total number of children aged 6-59 months surveyed.

HIV/AIDS Prevention Indicators

HIV Prevalence proportion: Adults (15–49 years)

The adult HIV prevalence proportion is the estimated number of adults living with HIV divided by the adult population (aged 15–49).

Estimated number of people living with HIV: Adults and Children

Estimated number of adults and children living with HIV. Adults are 15 years and over. Children are defined as those aged 0–14 years.

Estimated number of people living with HIV: Women (15+ years)

Estimated number of women (aged 15 and over) living with HIV.

Estimated number of people living with HIV: Children (0–14 years)

Estimated number of children under age 15 living with HIV.

Males Reporting Condom Use With Last Non-Regular Partner

Among men who have had high risk sex in the last year, percentage who used condoms during their last sexual intercourse with a non-regular partner/non-cohabitating partner.

Females Reporting Condom Use With Last Non-Regular Partner

Among women who have had high risk sex in the last year, percentage who used condoms during their last sexual intercourse with a non-regular partner/non-cohabitating partner.

Infectious Diseases Control Indicators

TB Estimated Number of Cases

The estimated number of cases (all forms).

TB Case Detection Rate

TB Case Detection Rate is defined as the percentage of the annual new smear-positive notifications of the estimated annual new smear-positive incidence.

TB (DOTS) Treatment Success Rate

The proportion of smear-positive patients who were cured plus the proportion who completed treatment.

Malaria Cases per 100,000

Number of malaria cases per 100,000 of the population during the year for which data was reported.

DOTS Coverage

The percentage of the national population living in areas where health services have adopted DOTS. "Areas" are the lowest administrative or management units in the country (townships, districts, counties, etc). If an area is considered a DOTS area, then all cases registered and reported in that area are considered DOTS cases and the population living within the boundaries of that area counts toward national DOTS coverage. As a measure of patient access to diagnosis and treatment under DOTS, coverage is an approximation, and usually an overestimate.

HIV-Infected with Active TB

The TB incidence rate in HIV-infected people 15-49 divided by the incidence rate in HIV-uninfected people 15-49.

Avian Influenza: Cumulative Number of Confirmed Human Cases

The cumulative number of confirmed human cases of Avian Influenza A/(H5N1) reported to WHO. The total number of cases includes number of deaths. WHO reports only laboratory-confirmed cases.

Avian Influenza: Cumulative Number of Confirmed Human Deaths

The cumulative number of confirmed human deaths from Avian Influenza A/(H5N1) reported to WHO. WHO reports only laboratory-confirmed cases and deaths.

Child Sleeps Under Insecticide-Treated Net

Percentage of children under five years of age who slept under an Insecticide Treated Net (ITN) the night before the survey. An ITN is (1) a permanent net that does not require any treatment, or (2) a pretreated net obtained within the last six months, or (3) a net that has been soaked with insecticide within the past six months.

Equity in Bednet (ITN) Ownership

Proportion of households in the lowest income quintile with an ITN / proportion of households in the highest income quintile with an ITN.

Statistical Sources For Rwanda

BUCEN-IDB 2006	United States Census Bureau (BUCEN), International Programs Center. International Database. August 2006.
BUCEN-IDB 2008	United States Census Bureau (BUCEN), International Programs Center. International Database. August 2008.
BUCEN-IDB 2009	United States Census Bureau (BUCEN), International Programs Center. International Database. November 2009.
BUCEN-IDB 2010	United States Census Bureau (BUCEN), International Programs Center. International Database. April 2010.
CIA World Factbook 2009	CIA World Factbook 2009 https://www.cia.gov/library/publications/the-world-factbook/index.html
CIA World Factbook 2009	CIA World Factbook, 2008 https://www.cia.gov/library/publications/the-world-factbook/index.html . Last accessed April, 2009.
CIA World Factbook 2010	CIA World Factbook 2010 https://www.cia.gov/library/publications/the-world-factbook/index.html
CIA World Factbook 2010	CIA World Factbook November 2010 https://www.cia.gov/library/publications/the-world-factbook/index.html
DHS STATcompiler as of September 2008 2008	DHS STATcompiler as of September 2008 http://www.statcompiler.com
Global Atlas 2010	WHO Global Health Atlas: http://apps.who.int/globalatlas/dataQuery/default.asp
Human Development Report - 2007/2008 2008	Human Development Report 2007/2008. Fighting climate change: Human solidarity in a divided world. Published for the United Nations Development Programme (UNDP)
Rwanda DHS 1992	Office National de la Population and Macro International Inc. "Enquête Démographique et de Santé Rwanda, 1992." Columbia, MD: Macro International Inc., Feb. 1994.
Rwanda DHS 2000	Office National de la Population (ONAPO) [Rwanda] et ORC Macro. 2001. Enquête Démographique et de Santé, Rwanda 2000. Kigali, Rwanda et Calverton, Maryland, USA: Ministère de la Santé, Office National de la Population et ORC Macro.
Rwanda DHS 2005	Institut National de la Statistique du Rwanda (INSR) and ORC Macro. 2006. Rwanda Demographic and Health Survey 2005. Calverton, Maryland, USA: INSR and ORC Macro.
Rwanda DHS - Preliminary Report 2007-2008	Rwanda Interim Demographic and Health Survey 2007-08 Preliminary Report National Institute of Statistics Ministry of Finance and Economic Planning Ministry of Health Macro International Inc. Calverton, Maryland, USA July 2008
Rwanda DHS Final Report 2007	Measure DHS Demographic and Health Survey website: Rwanda DHS Final Report
UNAIDS 2008 2008	2008 Report on the Global AIDS Epidemic. Geneva: UNAIDS, 2008

UNESCO Global Monitoring Report 2010	EFA Global Monitoring Report April 2010
UNICEF 2010	UNICEF Global Database/Child Mortality
WHO Global Health Atlas 2008	Accessed March of 2008
WHO Global Health Atlas 2008	WHO Website: http://apps.who.int/globalatlas/dataQuery/default.asp
WHO/Global Summary 2002	WHO Vaccine-Preventable Diseases Monitoring System. 2002 Global Summary. World Health Organization, Geneva.
WHO/Global Summary 2008	Immunization surveillance, assessment and monitoring section of the WHO website: http://www.who.int/immunization_monitoring/en/globalsummary/timeseries/tscoveredtp3.htm
WHO/Hill 2005	Maternal Mortality in 2005: Estimates developed by WHO, UNICEF, UNFPA and The World Bank
WHO: Global Atlas 2009	WHO Global Health Atlas: http://apps.who.int/globalatlas/dataQuery/default.asp
WHO: Global Summary 2009	WHO Global Summary Vaccine: http://www.who.int/immunization_monitoring/en/globalsummary/timeseries/tscoveragemcv.htm
World Bank/WDI 2005	World Bank Development Indicators 2005, CD-Rom. Washington, DC: The World Bank, 2005.
World Bank/WDI 2006	World Bank Development Indicators 2006. Washington, DC: The World Bank, 2005. Available at: http://devdata.worldbank.org/wdi2006/contents/index2.htm . Last accessed April, 2007.
World Bank/WDI Database 2007	World Bank Development Indicators Database 2007. Washington, DC: The World Bank, 2007. Available at: http://devdata.worldbank.org/data-query/ . Last accessed April, 2007.