



Reproductive Health Supplies Coalition

14th General Membership Meeting

8 October 2013



Reproductive Health
SUPPLIES COALITION



LAC Forum

Regional Collaboration



LAC Forum
REPRODUCTIVE HEALTH COMMODITY SECURITY
A Forum of the Reproductive Health Supplies Coalition

**RH SUPPLIES
COALITION**

**EXECUTIVE
COMMITTEE**

**WORKING
GROUPS**

INTERNATIONAL LEVEL

REGIONAL LEVEL

LAC FORUM

**SECONAF FORUM
(FRANCOPHONE
AFRICA)**

2010

Founded during a RHCS regional meeting with UNFPA LACRO, Panama 2010

15

15 partners from member organizations in 2010;
TODAY: **309** partners from **62** organizations,
37 official member organizations from **18** countries

SECTORS

Public, nongovernmental, private, and commercial sectors

**KEY
PLAYERS**

UNFPA LACRO, USAID, IPPF/HRO,
JSI/DELIVER, IPAS, PAHO, and RH Supplies
Coalition

MISSION

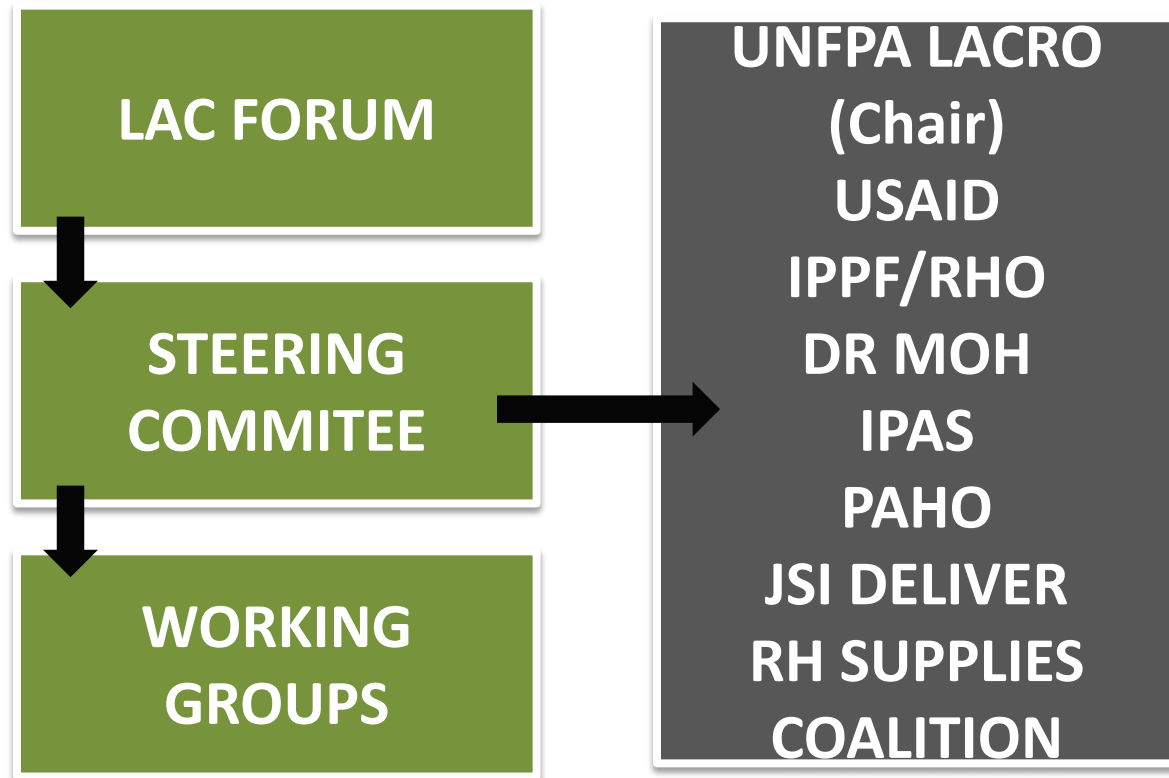
- Maintain progress and avoid setbacks

GOAL

- Increase access for all, especially vulnerable populations

HOW?

- Promote coordination/harmonization of efforts and resources
- Strategic Plan drafted in 2012
- Encourage technical collaboration through working groups



**RESOURCE
MOBILIZATION &
VISIBILITY**

COMMITMENTS

**WORKING
GROUPS**

MULTISECTORIAL

CORE WORK

CHALLENGE

Reach **sustainability** for working groups

- Continue to **INNOVATE** and take coordinated **ACTIONS**
 - Replenish the **LAC FUND**
 - Ensure annual and working group **MEETINGS**
- 

Synergies between LAC Forum and the A&A WG


IPPF advocacy campaign on inequalities

- Regional and country info sheets
- Advocacy campaign

Compromisos group (Commitments), LAC Fund proposal for an assessment

- Systematized gaps in SRH supplies security
- Propose successful and replicable interventions
- Inventory of mechanisms that follow RH supplies security in each country
- Detailed registry of all governmental commitments in SRH
- Observatory of commitments for advocacy purposes to follow-up on commitments made for SRH

Dashboard of indicators, Resource Mobilization/Visibilization group

- Develop and test methodology to identify and prioritize marginalized populations with high need of SRH services
 - First phase: identify target program areas to increase access for these populations
 - Second phase: identify target geographic regions
- 



THANK YOU!

www.rhsupplies.org/forolac

